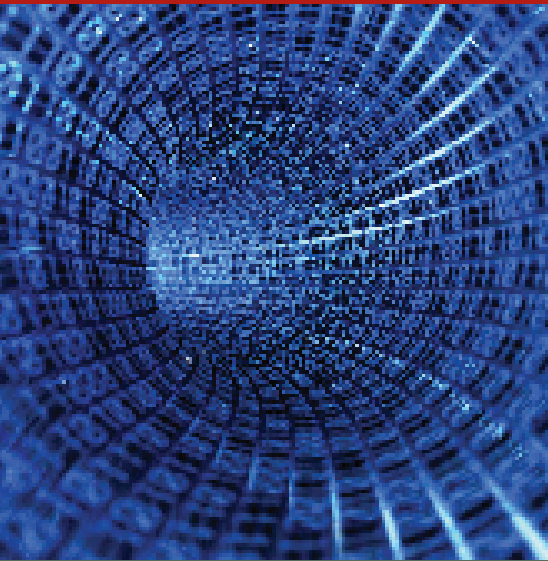


# Service-Oriented Architecture (SOA)



## Service Features

- Product Portfolios
- Industry Event Reports
- Market Assessments
- Advisory Reports

## Companies Covered

- Oracle
- SAP
- Microsoft
- IBM
- Red hat
- Sun Microsystems
- TIBCO
- Software AG

Service-Oriented Architecture (SOA) has become the leading industry paradigm for software development. SOA-enabled software is inherently modular and reusable, with some profoundly beneficial qualities including: flexibility, agility and, above all, cost efficiency. To truly realize these benefits, however, companies must first implement the software infrastructure designed to enable and support SOA-based development.

This infrastructure solution, called a **“SOA Platform”**, consists of design, development, runtime, and management tools that are closely intertwined. Together, these SOA tools help customers move away from monolithic, legacy software and instead create discrete software services that can be assembled into larger applications. Because these software services are developed using strict interface standards, developers can quickly find pre-built components to suit specific business requirements, and combine them to form cross-platform applications capable of interacting with other SOA-enabled software.

## Stay Informed with Analysis of Major Industry Issues

- Mergers, acquisitions, partnerships, and licensing arrangements among SOA vendors aimed at assembling comprehensive SOA product suites.
- Evolution of SOA solutions to support data management and business process management and to more fully encompass design-time and run-time governance capabilities.
- Delivery of SOA suite functionality as both licensed software and on-demand services via software as a service and infrastructure as a service.
- Support for flexible SOA B2B and A2A integration patterns required by global enterprises, including pre-packaged business processes and supporting material within vertical industries.
- Evolution of SOA software appliances tied closely to highly virtualized environments as a solution for presently inflexible hardware provisioning and utilization capabilities.
- Role of professional services in designing, building and maintaining SOA solutions within diverse horizontal and vertical market segments.

**SOA Suite solutions are rated on the following selection criteria:**

- Ability to offer supportive tools that assist in the installation and runtime management of the entire SOA environment, spanning operating system and application server monitoring to process-level governance.
- Ability to provide a series of product packaging, professional services and support options designed to target specific use cases, vertical markets and company sizes.
- Ability to comply with currently ratified WS-\* standards, support a wide array of line-of-business applications (either directly or through adapters), function within both Java and .NET architectures.
- Ability to reach an international market and offer on-site professional services and support. Solutions must also directly target specific vertical markets, company sizes and horizontal use cases through a combination of training, information, best practices, pre-built packages and verticalized products.
- Ability to offer a wide array of closely integrated SOA infrastructure products including an ESB (or ESB functionality), registry/repository, application servers, application tooling, administration monitoring, business process lifecycle tools and portals.

Market Segment	Solution Opportunities
Service-Oriented Architecture	Enterprise Service Bus (ESB) Business Rules Provisioning Business Process Modeling Notation (BPMN) Business Process Execution Language (BPEL) Virtualization Application Servers Business Activity Monitoring (BAM) Business Process Management (BPM) Compliance Governance Event Driven Architecture (EDA) Composite Applications Universal Description Discovery and Integration (UDDI) Complex Event Processing (CEP) Repository/Registry .Net Master Data Management Business Event Management (BEM) Complex Event Processing (CEP)
Integration Software and Services	Business to Business Integration (B2Bi) Enterprise Service Bus (ESB) Application Servers Workflow Trading Grids Web Forms Radio Frequency Identification (RFID) Value Added Networks Electronic Data Interchange (EDI) Event Driven Architecture (EDA) Master Data Management Business Activity Monitoring Document Scanning Extract, Transform and Load (ETL) Enterprise Application Integration (EAI) Compliance Master Data Management (MDM) Product Information Management (PIM)
Application and Data Delivery	Web 2.0 Representational State Transfer (REST) Asynchronous JavaScript and XML (AJAX) Rich Internet Applications (RIA) Portal WSRP Mashups Software as a Service (SaaS) Wikis Business Intelligence Enterprise Content Management (ECM) Dashboards Authentication and User Access

21335 Signal Hill Plaza, Suite 200  
Sterling, VA 20164  
www.currentanalysis.com

Fax +1 703 404 9300  
Voice +1 703 404 9200  
Toll Free +1 877 787 8947

**About Current Analysis**

Current Analysis ([www.currentanalysis.com](http://www.currentanalysis.com)) has been helping leading technology companies improve their competitive responsiveness since 1997. Sales teams, product managers, and marketing professionals rely on Current Analysis for the latest competitive analysis and tactical advice. Current Analysis' structured, rapid competitive response solutions help companies improve their business performance and create a repeatable process advantage over competitors. The company serves more than 40,000 users at over 200 enterprise clients across the telecommunications, networking, and business software industries.